

Erskine School

<https://erskine.clearview.ab.ca/>



**Clearview
Public Schools**

We All Belong – We All Succeed

About Us:

Erskine School is located in the hamlet of Erskine. We operate on the western edge of Clearview School Division, and serve students from Erskine and the surrounding County of Stettler.

We have an enrollment of approximately 140 students in kindergarten to grade 9. “Start Right” enrolment (Pre-K) is 21 students. We have one split homeroom class at grade 7/8 (24 students), but combine other grades in subjects such as phys. ed., music, and art. The grade 5 and 6 students are combined (30) for social studies and science as well as complimentary classes.

We have 10 teachers and 6 support staff members that have the pleasure of working with our students and families.



Mission and Core Values:

- Our mission is to provide a learning atmosphere of caring and belonging, where students have the opportunity to make choices that will lead to success in the areas of academic, physical, social and personal development.
- We value: honesty, loyalty, excellence, fairness, empathy and respect.



School Motto:

“Success is Our choice.”

This implies that each student in our school has every opportunity to reach success with the guidance of teachers through the support of parents. As partners, we work together to ensure every student achieves to the best of their ability.



Program Highlights:

Integral to our school's success is:

- Leadership/Citizenship/ Character development and Awards; Leadership Class (Grade 9), Students' Union (Junior High), Cross Graded Tribe Activities, HYC mentorship, Family School Liason Worker
- Strong Academic results
- Implementation of proven instructional tools
- Excellence in Athletics - Cross Country Running, Volleyball, Basketball, Curling, Archery, Badminton, Track and Field
- Team Building Activities - Leadership Trips for Grade 7 - 9 - Activate and Legislature Building visit, Montreal, Quebec, and Ottawa Trip
Circle Square Ranch - Grade 5 and 6 County Students
- Strong Nutritional Program - Math and Munchies, Snack Bins, Hot lunches
- Math and Munchies Program to build Numeracy Skills
- Incredible Parent Support
- Create leadership opportunities for all students in the classroom and throughout the entire school (student lunch supervisors, breakfast program, recycling crew, etc.,...)
- Many Junior High Elective choices; music, art, CTF/Makerspace, outdoor ed., CTS - industrial arts, home economics, drama, French as a Second Language

Character Education:



Building positive character traits are embedded in all we do at Erskine School. Our values of honesty, loyalty, excellence, fairness, empathy and respect are upheld and expected in the halls, classrooms, gym and playground. Students are awarded for demonstrating positive character traits: The Colin Cassidy Leadership Award, and The Rae Munden “Heart of Gold” Award for grade 7 - 9., The Winnet and Fantastic Four Awards for Grades 3 - 6.

Athletics & Extra-Curricular:

At Erskine School we are thrilled to offer competitive sports programs and exciting extracurricular activities:

- Cross Country Running, Volleyball, Basketball, Curling, Badminton, Track and Field and others
- Family Ski Day at Canyon Ski Hill supported by our School Council, Nakiska Junior High Ski Trip
- Field trips - Swimming, Rochon Sands, Deer Valley Meadows, Circle Square Ranch, Drumheller, Rosebud Theatre, Activate, Legislature Building, Montreal, Quebec, and Ottawa Trip, etc.,...
- Fun Days - Terry Fox Day, Rochon Rush Run, Halloween, Christmas and Winter Celebrations
- Christmas Concert Production
- Remembrance Day Ceremony
- Dress up days



FNMI Results

We do not have any separate FNMI results to publish as our FNMI enrolment is quite low.

First Nations, Metis and Inuit cultures are supported and recognized at school functions through our land acknowledgement, taught about in much of our daily instruction, recognized by Orange Shirt Day and celebrated with our June Indigenous day.

Welcoming, Caring, Respectful and Safe

Welcoming, Caring, Respectful and Safe Learning Environments – Measure Details

The percentage of teachers, parents and students who agree that their learning environments are welcoming, caring, respectful and safe.

	School										Measure Evaluation			Authority										Province									
	2020		2021		2022		2023		2024		Achievement	Improvement	Overall	2020		2021		2022		2023		2024		2020		2021		2022		2023		2024	
	N	%	N	%	N	%	N	%	N	%				N	%	N	%	N	%	N	%	N	%	N	%	N	%	N	%	N	%	N	%
Overall	n/a	n/a	81	97.4	79	94.5	85	96.8	92	97.9	n/a	Maintained	n/a	n/a	n/a	826	89.8	845	87.2	943	89.5	978	88.4	n/a	n/a	231,091	87.8	249,941	86.1	257,391	84.7	265,321	84.0
Parent	n/a	n/a	13	100.0	11	90.9	15	98.3	16	99.2	n/a	Maintained	n/a	n/a	n/a	99	89.5	109	84.9	147	87.5	139	89.0	n/a	n/a	30,980	88.2	31,715	86.9	31,885	85.6	33,232	85.3
Student	n/a	n/a	58	92.2	58	92.6	60	92.0	67	94.6	n/a	Maintained	n/a	n/a	n/a	605	82.4	614	82.0	657	85.9	698	83.7	n/a	n/a	169,900	79.8	187,258	77.7	193,156	76.6	200,020	75.2
Teacher	n/a	n/a	10	100.0	10	100.0	10	100.0	9	100.0	n/a	Maintained	n/a	n/a	n/a	122	97.4	122	94.7	139	95.1	141	92.6	n/a	n/a	30,211	95.3	30,968	93.6	32,350	92.0	32,069	91.6

Results:

96.8% of our respondents agree that our students are safe at school.
Caring/Respect/Fairness are practiced here!

Strategies:

- *Cross graded TRIBE activities *Leadership 8/9 (role models)
- *Nutritional Program
- *Awarding character development at end of year *Greeted at the door
- *All staff 'own' our students *Phone calls to school always welcome!
- *Exterior doors are locked *Effective supervision
- *Hour Zero Safety Protocols and Training





Access to Supports & Services

Access to Supports & Services – Measure Details

The percentage of teachers, parents and students who agree that students have access to the appropriate supports and services at school.

	School										Measure Evaluation			Authority										Province									
	2020		2021		2022		2023		2024		Achievement	Improvement	Overall	2020		2021		2022		2023		2024		2020		2021		2022		2023		2024	
	N	%	N	%	N	%	N	%	N	%				N	%	N	%	N	%	N	%	N	%	N	%	N	%	N	%	N	%	N	%
Overall	n/a	n/a	81	90.2	79	91.3	85	96.4	92	95.3	n/a	Maintained	n/a	n/a	n/a	826	83.6	845	83.6	942	86.8	977	84.0	n/a	n/a	230,761	82.6	249,570	81.6	256,994	80.6	264,733	79.9
Parent	n/a	n/a	13	87.3	11	83.3	15	97.3	16	88.5	n/a	Maintained	n/a	n/a	n/a	99	76.8	109	77.2	146	79.9	139	83.9	n/a	n/a	30,936	78.9	31,684	77.4	31,847	75.7	33,177	75.4
Student	n/a	n/a	58	89.5	58	90.4	60	94.0	67	97.4	n/a	Improved	n/a	n/a	n/a	605	83.4	614	85.4	657	88.7	697	83.8	n/a	n/a	169,631	80.2	186,935	80.1	192,805	79.9	199,516	78.7
Teacher	n/a	n/a	10	93.9	10	100.0	10	98.0	9	100.0	n/a	Maintained	n/a	n/a	n/a	122	90.7	122	88.3	139	91.9	141	84.3	n/a	n/a	30,194	88.7	30,951	87.3	32,342	86.2	32,040	85.6

Results:

Erskine School continues to exceed the provincial average in our access to supports and services for students.

Strategies:

- Erskine School regularly schedules consultations from Clearview Public Schools' Occupational and Speech therapists. These therapists work to identify needs and strategies for intervention for many of our youngest students. Many strategies are supported by our own staff, while at times vision, hearing and behavioral specialists have been brought in to work with our most vulnerable student population.
- Access to our Family School Liason Worker
- Access to the CARS Program
- Access to the HYC mentorship and Rainbows program
- Professional and experienced support staff

Student Learning Engagement

Student Learning Engagement – Measure Details

The percentage of teachers, parents and students who agree that students are engaged in their learning at school.

	School										Measure Evaluation			Authority										Province									
	2020		2021		2022		2023		2024		Achievement	Improvement	Overall	2020		2021		2022		2023		2024		2020		2021		2022		2023		2024	
	N	%	N	%	N	%	N	%	N	%				N	%	N	%	N	%	N	%	N	%	N	%	N	%	N	%	N	%	N	%
Overall	n/a	n/a	81	88.0	79	88.7	85	92.5	92	89.4	n/a	Maintained	n/a	n/a	n/a	826	86.8	845	85.8	943	85.8	979	83.5	n/a	n/a	230,956	85.6	249,740	85.1	257,214	84.4	265,079	83.7
Parent	n/a	n/a	13	89.7	11	84.8	15	97.8	16	93.8	n/a	Maintained	n/a	n/a	n/a	99	88.5	109	88.1	147	85.6	139	85.5	n/a	n/a	30,994	89.0	31,694	88.7	31,862	87.3	33,209	86.7
Student	n/a	n/a	58	74.1	58	81.3	60	79.6	67	74.5	n/a	Maintained	n/a	n/a	n/a	605	74.8	614	72.6	657	74.6	699	69.7	n/a	n/a	169,789	71.8	187,102	71.3	193,029	70.9	199,823	69.3
Teacher	n/a	n/a	10	100.0	10	100.0	10	100.0	9	100.0	n/a	Maintained	n/a	n/a	n/a	122	97.0	122	96.7	139	97.4	141	95.5	n/a	n/a	30,173	96.0	30,944	95.5	32,323	95.1	32,047	95.1

Results:

89.4% of parents, students and teachers agree that Erskine School students are engaged in their learning.

Strategies:

- Balancing the use of technology with paper and pencil and “hands on” activities
- Engaging topics and projects
- Strong library program for picking “Good Fit” books
- Out of the classroom learning activities:
 - CTS at Wm E Hay, swimming, curling, community ice rink, Red Deer Leadership Trip, Junior Achievement, Farm Safety, Kerry Wood Nature Centre, Rosebud Theatre, Fort Normandeau, etc...
- Cultural activities and events
- Canyon ski and tubing trip
- Fun filled cross graded activities and dress up days
- Incredible extra curricular activities and opportunities



Citizenship

Citizenship – Measure Details

Percentage of teachers, parents and students who are satisfied that students model the characteristics of active citizenship.

	School										Measure Evaluation			Authority										Province									
	2020		2021		2022		2023		2024		Measure Evaluation			2020		2021		2022		2023		2024		2020		2021		2022		2023		2024	
	N	%	N	%	N	%	N	%	N	%	Achievement	Improvement	Overall	N	%	N	%	N	%	N	%	N	%	N	%	N	%	N	%	N	%		
Overall	93	86.7	81	93.7	79	90.2	85	95.5	92	96.2	Very High	Maintained	Excellent	975	83.5	825	85.7	845	83.8	943	84.3	978	85.3	264,413	83.3	230,843	83.2	249,770	81.4	257,231	80.3	265,100	79.4
Parent	18	80.0	13	92.3	11	85.5	15	100.0	16	97.4	Very High	Maintained	Excellent	158	78.5	98	82.5	109	81.9	147	78.9	139	85.2	36,891	82.4	30,905	81.4	31,689	80.4	31,869	79.4	33,217	78.7
Student	65	80.1	58	90.8	58	85.2	60	86.6	67	91.2	Very High	Maintained	Excellent	683	76.1	605	79.3	614	77.0	657	81.0	698	78.6	193,577	73.8	169,741	74.1	187,120	72.1	193,015	71.3	199,816	69.6
Teacher	10	100.0	10	98.0	10	100.0	10	100.0	9	100.0	Very High	Maintained	Excellent	134	96.0	122	95.4	122	92.6	139	92.9	141	92.1	33,945	93.6	30,197	94.1	30,961	91.7	32,347	90.3	32,067	89.8

Results:

Erskine School scores high above provincial averages in citizenship.

Strategies:

- *Social Studies curriculum *Cross-graded TRIBE activities
- *Coaching/role modeling *Staff/Student/Parent relationships
- *Guests who enhance our key virtues *Awards recognizing citizenship and leadership
- *Engage in cultural activities that promote tolerance and understanding
- *Student Leadership Opportunities - Lunch Supervisors, recycling, etc....

Parental Involvement

Parental Involvement – Measure Details

Percentage of teachers and parents satisfied with parental involvement in decisions about their child's education.

	School										Measure Evaluation			Authority										Province									
	2020		2021		2022		2023		2024		Achievement	Improvement	Overall	2020		2021		2022		2023		2024		2020		2021		2022		2023		2024	
	N	%	N	%	N	%	N	%	N	%				N	%	N	%	N	%	N	%	N	%	N	%	N	%	N	%	N	%	N	%
Overall	28	83.9	23	86.4	21	85.6	25	89.4	25	93.0	Very High	Maintained	Excellent	292	83.4	220	79.7	230	80.4	286	83.4	280	82.2	70,377	81.8	60,919	79.5	62,412	78.8	63,935	79.1	64,949	79.5
Parent	18	67.8	13	82.8	11	71.2	15	78.9	16	86.1	Very High	Maintained	Excellent	158	71.2	98	66.2	108	71.8	147	72.0	139	78.4	36,556	73.9	30,886	72.2	31,598	72.3	31,720	72.5	33,070	74.4
Teacher	10	100.0	10	90.0	10	100.0	10	100.0	9	100.0	Very High	Maintained	Excellent	134	95.6	122	93.2	122	88.9	139	94.9	141	86.0	33,821	89.6	30,033	86.8	30,814	85.2	32,215	85.7	31,879	84.6

Results:

93% of teachers and parents were satisfied with the parental involvement at Erskine School. We firmly believe that aside from the student, parents are the greatest influence on their child's success at school.

Strategies:

- Continue reporting student progress with three report card terms
- Continue with the PowerSchool program through grades 7 - 9 so that parents can continue to be informed in their child's academic progress
- Continued communication through: BrightArrow, Newsletters, Open Houses, and Parent Teacher Interviews
- Staff will continue to be visible and approachable
- School Council is welcoming, informative and active
- Encourage parent volunteers, where possible



Staff Development

Each year individual staff select professional development goals that align with goals set by both the school division and our school.

Our 2024-25 school goals are centered around literacy, numeracy and student engagement.

Staff meet with administration twice a year to review their goals and progress.

This year the school's professional development budget has been increased by \$4500 and release time has increased 15 to 20.

Education Quality

Education Quality – Measure Details

Percentage of teachers, parents and students satisfied with the overall quality of basic education.

	School										Measure Evaluation			Authority										Province									
	2020		2021		2022		2023		2024		Measure Evaluation			2020		2021		2022		2023		2024		2020		2021		2022		2023		2024	
	N	%	N	%	N	%	N	%	N	%	Achievement	Improvement	Overall	N	%	N	%	N	%	N	%	N	%	N	%	N	%	N	%	N	%		
Overall	93	89.7	81	93.1	79	92.3	85	95.5	92	96.6	Very High	Maintained	Excellent	975	88.5	824	89.9	844	89.4	943	89.8	979	89.5	264,623	90.3	230,814	89.6	249,532	89.0	257,584	88.1	265,643	87.6
Parent	18	84.1	13	87.2	11	84.8	15	94.4	16	93.8	Very High	Maintained	Excellent	158	82.9	99	86.5	109	85.8	147	84.3	139	85.5	36,907	86.7	31,024	86.7	31,728	86.1	31,890	84.4	33,250	83.8
Student	65	85.0	58	92.2	58	92.0	60	91.9	67	96.0	Very High	Maintained	Excellent	683	86.0	603	85.3	612	87.1	657	89.7	699	88.4	193,763	87.8	169,589	86.3	186,834	85.9	193,343	85.7	200,322	84.9
Teacher	10	100.0	10	100.0	10	100.0	10	100.0	9	100.0	Very High	Maintained	Excellent	134	96.6	122	97.9	123	95.5	139	95.4	141	94.7	33,953	96.4	30,201	95.7	30,970	95.0	32,351	94.4	32,071	93.9

96.6% of responses were satisfied with the overall quality of basic education of Erskine School.



Grade 1-3: Literacy Data

In the 2023 - 24 school year, the provincial government asked that we conduct assessments for grades 1 - 3 two times throughout the school year to identify “At Risk Students” for literacy and numeracy. These results help us determine which students require more support and helps us successfully program for each class.

Literacy	Initial Assessment Number of At Risk Students	Final Assessment Number of At Risk Students
Grade 1	0	0
Grade 2	0	0
Grade 3	0	0



Grade 1-3: Numeracy Data

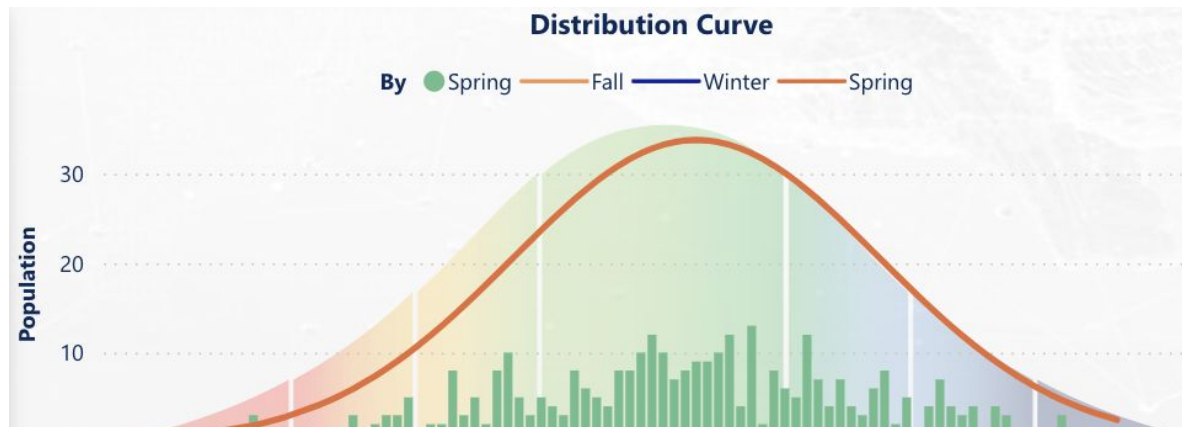
The provincial government assigns additional dollars to schools based on the number of students that are identified as “At Risk” in numeracy and literacy using approved assessment tools.

Numeracy	Initial Assessment Number of At Risk Students	Final Assessment Number of At Risk Students
Grade 1	5	2
Grade 2	1	1
Grade 3	2	0



Literacy Data

The 2022-23 school year was the first year that we used the 3T literacy assessments from grades 1 - 9. Students in grade one are assessed in January and May and grade 2 - 9 in September, January and May. Our spring 2024 school results appear below in orange and are compared with the NORM or average sample appearing behind it. This indicates that, as a school, we are doing well with literacy, but there is always room for improvement and individual students that need additional support.



Learning Disruption

Despite the many disruptions caused by the Covid 19 pandemic to the entire school, classes, or individuals since 2020, students at Erskine School continue to succeed academically. Results on our 3T, and provincially assigned literacy and numeracy assessments continue to be strong.

In past years, the handful of learners that were identified as below average in literacy were given additional support either within the classroom or in a pull out situation working one on one with an educational assistant on specific literacy skills.

This year, teachers are using a universal approach to enhance literacy skills in the classroom and work with individual students during library times twice a week.



Student Learning Opportunities

Program of Studies – Measure Details

Percentage of teachers, parents and students satisfied with the opportunity for students to receive a broad program of studies including fine arts, career, technology, and health and physical education.

	School										Measure Evaluation			Authority										Province									
	2020		2021		2022		2023		2024					2020		2021		2022		2023		2024		2020		2021		2022		2023		2024	
	N	%	N	%	N	%	N	%	N	%	Achievement	Improvement	Overall	N	%	N	%	N	%	N	%	N	%	N	%	N	%	N	%	N	%		
Overall	62	79.4	51	84.2	41	86.4	53	89.1	54	91.9	Very High	Maintained	Excellent	698	81.6	580	82.6	570	82.4	655	83.6	684	83.4	184,393	82.4	157,680	81.9	172,339	82.9	179,589	82.9	184,554	82.8
Parent	18	71.7	13	81.3	11	78.5	15	90.3	16	86.9	Very High	Maintained	Excellent	158	77.2	99	79.1	109	81.1	147	83.6	139	86.1	36,901	80.1	30,817	81.7	31,625	82.4	31,780	82.2	33,145	82.3
Student	34	69.1	28	75.0	20	81.9	28	77.1	29	88.7	Very High	Maintained	Excellent	406	74.8	359	74.1	339	76.9	369	76.6	404	77.1	113,541	77.8	96,676	74.9	109,776	76.9	115,487	77.4	119,382	76.7
Teacher	10	97.4	10	96.2	10	98.7	10	100.0	9	100.0	Very High	Maintained	Excellent	134	92.8	122	94.6	122	89.3	139	90.6	141	86.8	33,951	89.3	30,187	89.2	30,938	89.3	32,322	89.3	32,027	89.2

Results:

91.9% of teachers, parents and students reported that they are satisfied with the learning opportunities.

Strategies:

- We will continue with our daily phys. ed. model for all grades
- This year our grade 7 - 9 students have had the opportunity to take part in outdoor ed., art, CTF/Makerspace, French as a second language, as well as industrial arts and home economics at Wm E Hay.
- We will continue to pursue excellence in literacy and numeracy.
- 1 to 1 Student to technological device ratio
- Elementary students will continue to have scheduled music and library periods twice a week



Work Preparation

Work Preparation – Measure Details

Percentage of teachers and parents who agree that students are taught attitudes and behaviours that will make them successful at work when they finish school.

	School										Measure Evaluation			Authority										Province									
	2020		2021		2022		2023		2024		Achievement	Improvement	Overall	2020		2021		2022		2023		2024		2020		2021		2022		2023		2024	
	N	%	N	%	N	%	N	%	N	%				N	%	N	%	N	%	N	%	N	%	N	%	N	%	N	%	N	%	N	%
Overall	28	88.9	22	100.0	20	90.0	24	96.4	24	96.7	Very High	Maintained	Excellent	284	82.1	217	88.3	227	84.1	283	84.4	270	88.5	68,221	84.1	58,109	85.7	59,488	84.9	60,705	83.1	61,407	82.8
Parent	18	77.8	12	100.0	10	90.0	14	92.9	15	93.3	Very High	Maintained	Excellent	154	73.4	96	82.3	106	76.4	145	72.4	132	86.4	34,944	76.0	28,862	77.8	29,553	77.3	29,674	75.0	30,731	74.8
Teacher	10	100.0	10	100.0	10	90.0	10	100.0	9	100.0	Very High	Maintained	Excellent	130	90.8	121	94.2	121	91.7	138	96.4	138	90.6	33,277	92.2	29,247	93.7	29,935	92.5	31,031	91.3	30,676	90.7

Results:

96.7% of those that responded to the survey indicated that students were being prepared for the world of work.

Strategies:

Our three basic school rules are Try Your Best, Co-operate and Demonstrate Respect for Yourself and Others. These three rules are guidelines for life-long learners and success in the workplace. We will continue to maintain Erskine's focus on accountability, work ethic and high expectations.



Continuous Improvement

School Improvement – Measure Details

Percentage of teachers, parents and students indicating that their school and schools in their jurisdiction have improved or stayed the same the last three years.

	School										Measure Evaluation			Authority										Province									
	2020		2021		2022		2023		2024		Measure Evaluation			2020		2021		2022		2023		2024		2020		2021		2022		2023		2024	
	N	%	N	%	N	%	N	%	N	%	Achievement	Improvement	Overall	N	%	N	%	N	%	N	%	N	%	N	%	N	%	N	%	N	%		
Overall	92	83.4	81	97.3	79	87.5	85	91.4	92	95.5	Very High	Improved	Excellent	973	80.4	815	84.1	834	76.4	932	83.8	954	82.9	262,079	81.5	224,041	81.4	243,980	74.2	251,355	75.2	258,502	75.8
Parent	18	66.7	13	100.0	11	72.7	15	86.7	16	93.8	Very High	Improved	Excellent	157	75.2	96	79.2	108	68.5	143	77.6	132	87.9	35,896	80.0	28,016	81.7	30,147	70.0	30,371	72.5	31,538	75.2
Student	65	83.7	58	92.0	58	89.8	60	87.5	67	92.6	Very High	Maintained	Excellent	683	78.1	602	80.0	609	82.0	654	82.7	691	82.2	192,917	79.6	167,992	79.1	185,107	76.3	191,142	75.0	197,479	74.0
Teacher	9	100.0	10	100.0	10	100.0	10	100.0	9	100.0	Very High	Maintained	Excellent	133	88.0	117	93.2	117	78.6	135	91.1	131	78.6	33,266	85.0	28,033	83.4	28,726	76.3	29,842	78.0	29,485	78.2

Results:

95.5% of teachers, parents and students expressed that Erskine School continues to improve.

Strategies:

- *Increase staff capacity to assess and analyze literacy achievement in students and apply strategies. *Continue to emphasize our key programs in order to promote successful students through Literacy, and Numeracy. *Aim for 1 to 1 computer use.*Offer student choice: PBL, Inquiry *Challenge students through hands on learning.
- *Use the Collaborative Response Model to ensure every child receives the support they require. *Meet the mandates of Hour Zero to keep our children safe.
- *Use the strategies of Generative Dialogue to encourage staff growth and development.
- *Use professional development days to focus on student needs i.e. curriculum changes, literacy, numeracy, student engagement



Hour Zero

It is our privilege to work with clients who are diligently committed to the safety of the children in their care.

Our Story

Since our beginnings in 1999, we have dedicated ourselves to helping K-12 schools deal with some of the most difficult situations a school may ever face.

We strive to understand every aspect of school culture and respect its unique needs. We recognize the challenges of providing quality education in a safe and caring environment, while facing budget and time constraints, as well as the importance of nurturing relationships with community partners, including parents and first responders.

The company started as a consulting practice that specialized in school emergency plans and associated training. The numerous challenges of ensuring school plans could be easily managed, kept current - including training staff and students, and accessible to all school community users compelled us to develop Hour-Zero Online and create a school emergency program that is unprecedented in its quality and scope.

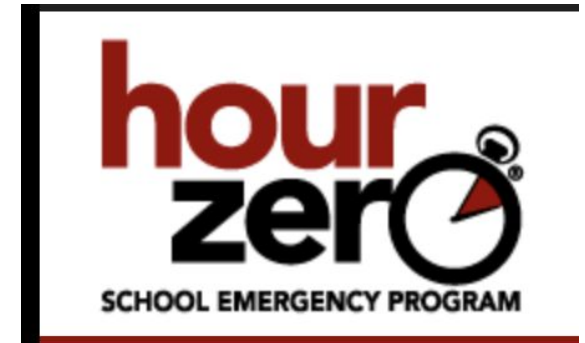
Today, Hour-Zero is used by more than 200,000 teachers, school and district administrators, support staff and first responders. Hour-Zero caters to clients that range in size from small private schools to large urban districts, located across the USA and Canada.

In 2009, Hour-Zero was selected as one of the Canada's ten most innovative small businesses through the Global Dell Small Business Excellence Award.

In 2010, Hour-Zero participated in the Department of Homeland Security NIMS STEP Evaluation. The evaluators concluded "HZ Online is consistent with all NIMS criteria." and stated, "HZ Online is intuitive and can enhance one's ability to do his/her job. The product is a robust preparedness tool that should enhance any school's emergency management system."

Hour-Zero continues to grow both our client base and our suite of offerings to schools. Regardless of what role you have in your school community, we at Hour-Zero will give you the time and attention you need to help ensure that from classroom to board room you are covered.

Hour-Zero is a privately held company and is incorporated in the USA and Canada.





Trends/Challenges

Population and declining enrolment are two factors that are beyond our control, but they impact our rural school nonetheless.

Finding teachers for short or long term leaves of absences has become a challenge for our rural school requiring us to find short term replacements until a more suitable candidate can be found. Thankfully, our staff is incredible, our students are resilient, and our families are supportive.

The overall educational challenge is to meet the needs of ALL our students and give them the best education possible. It takes all of us to build a system where our students have the best advantage possible to succeed. Due to a highly skilled staff, (and their ability to connect with each student), supportive parents and dedicated, creative students, Erskine School continues to meet the school division goal of:

‘We All Belong - We All Succeed’.

Greatest Successes

In 2022, we identified that our literacy assessment tools were less than effective and the resources we were using to meet all of our students needs were lacking in some areas in response to the change and focus of the new literacy curriculum. Currently, we are using a new assessment piece and diving deeper into our understanding of the pillars of literacy and increasing our knowledge base of the resources that may assist all of our students.

We are so very proud of the work we have done to close literacy gaps and continue to grow, learn and respond in this area.

This year, we will begin to investigate and focus our attention on student engagement. How do we help our students maintain the care and attention to detail in their studies to help them succeed at school now and in the future.



What are students saying about Erskine School?

Our school is good and has bought a lot of tech recently which has really helped to improve my learning experience.

I like the friendly teachers and how everyone is expected and encouraged to do their best.

I really like that the teachers try to help us with our schoolwork and are always coming up with more ideas to help us study or just do everyday class work -last year they introduced...chromebooks which makes work a lot easierI am typing this on a chromebook.

***...it is
a safe
place***

I love how most people I know don't get judged by how they look,.....

Never change the small classes, and the school activities because it is fun and helps us grow together.....

You should never change the size of this school. It's perfect because all of the teachers know us personally...

It feels good to be respected....the respect teachers have....

Things in our school that we value are independence, respect and responsibility.

I love our library program!

Stakeholder engagement

- Continue to re-establish relationships with our community volunteers; mentors, reading partners, crib partners
- Connect with our community; Christmas Carols, Random Acts of Kindness, Charitable Donations
- Continue to work with our EEPS school council to choose meeting times that work best for the majority of our parents. Continue to seek input from council members.
- Continue our vibrant Extra-Curricular Sports Program
- Encourage teachers, students and parents to complete Accountability Survey in the Spring
- Create opportunities to engage parents
 - Open house
 - Awards night
 - Christmas concert
 - Family School Ski Day
- Encourage volunteers
 - Field trips
 - Hot lunch
 - Sports program volunteers
 - White Elephant
 - Fundraisers

Planning for 2024-2027

In order to build citizens of the future, Erskine School will provide instructional practices which foster well rounded students who are fluent in literacy, numeracy and technology and who have the capacity to be resilient and build effective relationships.

Our focus areas for 2024-25 are:

- to continue focus on literacy and numeracy strategies to narrow the learning gaps across grades
- gain a better understanding of student engagement

[Clearview School Division Education Plan, 2023-26](#)

[Erskine Education Plan, 2023-26](#)





Contact Us!!

- Mr. Jeff Lee, Principal
- Mrs. Renee Lepard, Admin. Assistant
- Email: erskine@clearview.ab.ca
- 403-742-5220